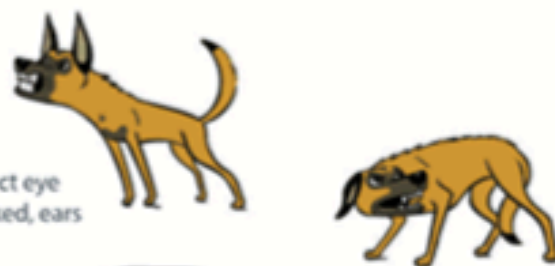


# THE SPECTRUM OF FEAR, ANXIETY & STRESS

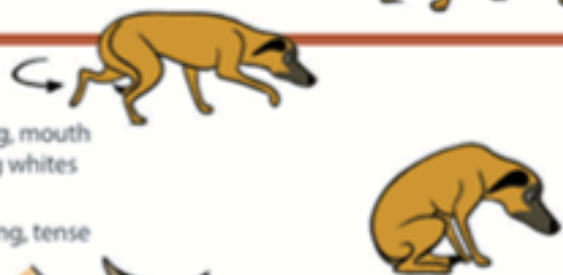
## RED: SEVERE SIGNS - FIGHT/AGGRESSION (FAS 5)

- Offensive Aggression - lunging forward, ears forward, tail up, hair may be up on the shoulders, rump, and tail, showing only the front teeth, lip pucker - lips pulled forward, tongue tight and thin, pupils possibly dilated or constricted.
- Defensive Aggression - hair may be up on the back and rump, dilated pupils, direct eye contact, showing all teeth including molars, body crouched and retreating, tail tucked, ears back.



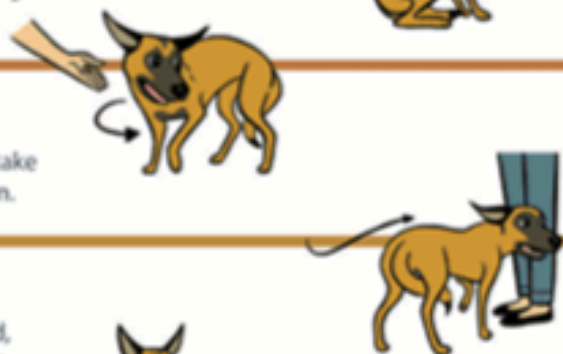
## RED: SEVERE SIGNS - FLIGHT/FREEZE/FRET (FAS 4)

- Flight - ears back, tail tucked, actively trying to escape - slinking away or running, mouth closed or excessive panting - tongue tight instead of loose out of mouth, showing whites of eyes, brow furrowed, pupils dilated.
- Freeze/Fret - tonic immobility, pupils dilated, increased respiratory rate, trembling, tense closed mouth, ears back, tail tucked, body hunched.



## YELLOW: MODERATE SIGNS (FAS 3)

- Similar to FAS 2 but turning head away, may refuse treats for brief moments or take treats roughly, may be hesitant to interact but not completely avoiding interaction.



## YELLOW: MODERATE SIGNS (FAS 2)

- Ears slightly back or to the side, tail down but not necessarily completely tucked, furrowed brow, slow movements or unable to settle, fidgeting, attention seeking to owner, panting with a tighter mouth, moderate pupil dilation.



## GREEN: MILD/SUBTLE SIGNS (FAS 1)

- Tail up higher, looking directly, mouth closed, eyes more intense, more pupil dilation, brow tense, hair may be just slightly up on the back and tail, may be expectant and excited or highly aroused.



## GREEN: ALERT/EXCITED/ANXIOUS? (FAS 0-1)

- Looking directly but not intensely, tail up slightly, mouth open slightly but lips loose, ears perked forward, slight pupil dilation.



## GREEN: PERKED/INTERESTED/ANXIOUS? (FAS 0-1)

- Looking directly but not intensely, tail up slightly, mouth open slightly but loose lips, ears perked forward, slight pupil dilation.



## GREEN: RELAXED (FAS 0)

A: Sleeping.

B: Neutral - ears in neutral position, not perked forward, brow soft, eyes soft, mouth closed but lips relaxed, body loose, tail carriage neutral, pupils normal dilation.

C: Friendly greeting - slow back and forth tail and butt wag, ears just slightly back, relaxed brow and eyes, may have mouth slightly open with relaxed lips and loose tongue.

